

H10

HYBRID GENERATOR



The H10 Hybrid Generator has solar, battery and diesel power which makes it ideal for low and variable temporary power applications over long periods of time. Its self charging system is completely automatic, simple and user friendly.

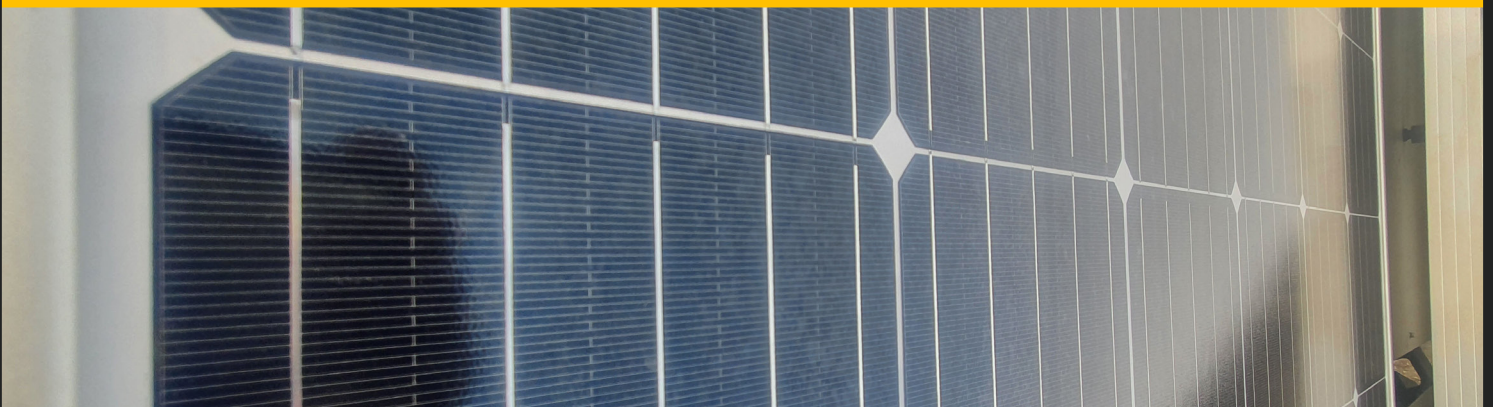


Self-Charging
Hybrid Power
you can trust

The adjustable roof solar panel, provides power to support and maintain the internal batteries in all weather conditions. With AGM sealed batteries that are robust, durable and long lasting.

The H10 has a Kubota engine providing world class performance with water cooling systems. In the case of low fuel, low oil pressure, high engine temperature and battery charge failure, the H10 has an exclusive MHM engine protection shutdown system.

The Linz alternator is heavy duty with proven reliability. All of these features and more result in an incredibly reliable and flexible power system that can be used in any remote location.



THE H10 GENERATOR HAS A RANGE OF FEATURES INCLUDING:

When looking for a robust, reliable, good quality hybrid battery diesel generator look no further than our 13kVA Solar Hybrid Battery Diesel Generator.

- ✓ **KEY FEATURES OF THE H10 HYBRID GENERATOR**
- ✓ **13KVA COMBINED SOLAR, BATTERY AND DIESEL GENERATOR POWER**
- ✓ **AUTOMATIC SELF-CHARGING HYBRID SYSTEM**
- ✓ **FULLY ADJUSTABLE ROOF MOUNTED HIGH EFFICIENCY SOLAR PANEL**
- ✓ **AGM SEALED LEAD ACID BATTERIES**
- ✓ **KUBOTA DIESEL ENGINE**
- ✓ **EXCLUSIVE MHM ENGINE PROTECTION SHUTDOWN SYSTEM**
- ✓ **LINZ ALTERNATOR**
- ✓ **FORK POCKETS & CENTRAL LIFTING EYE**
- ✓ **FULLY BUNDED BASE (110%)**

SPECIFICATIONS

Generator (230v)	13kVA/10.4kw		
Battery Storage	9.6kWh		
Battery	AGM Sealed Lead Acid		
Solar Panel	300W		
Insulation Class	H		
Mechanical Protection - IP	23		
Noise Level - Gen Model Noise Level - Battery Model	LWA=87 dBa@7m=62 = 0		
DIMENSIONS (machine only, solar panel down)			
L: 2200 mm	W: 1100 mm	H: 1450 mm	Weight: 1050kg